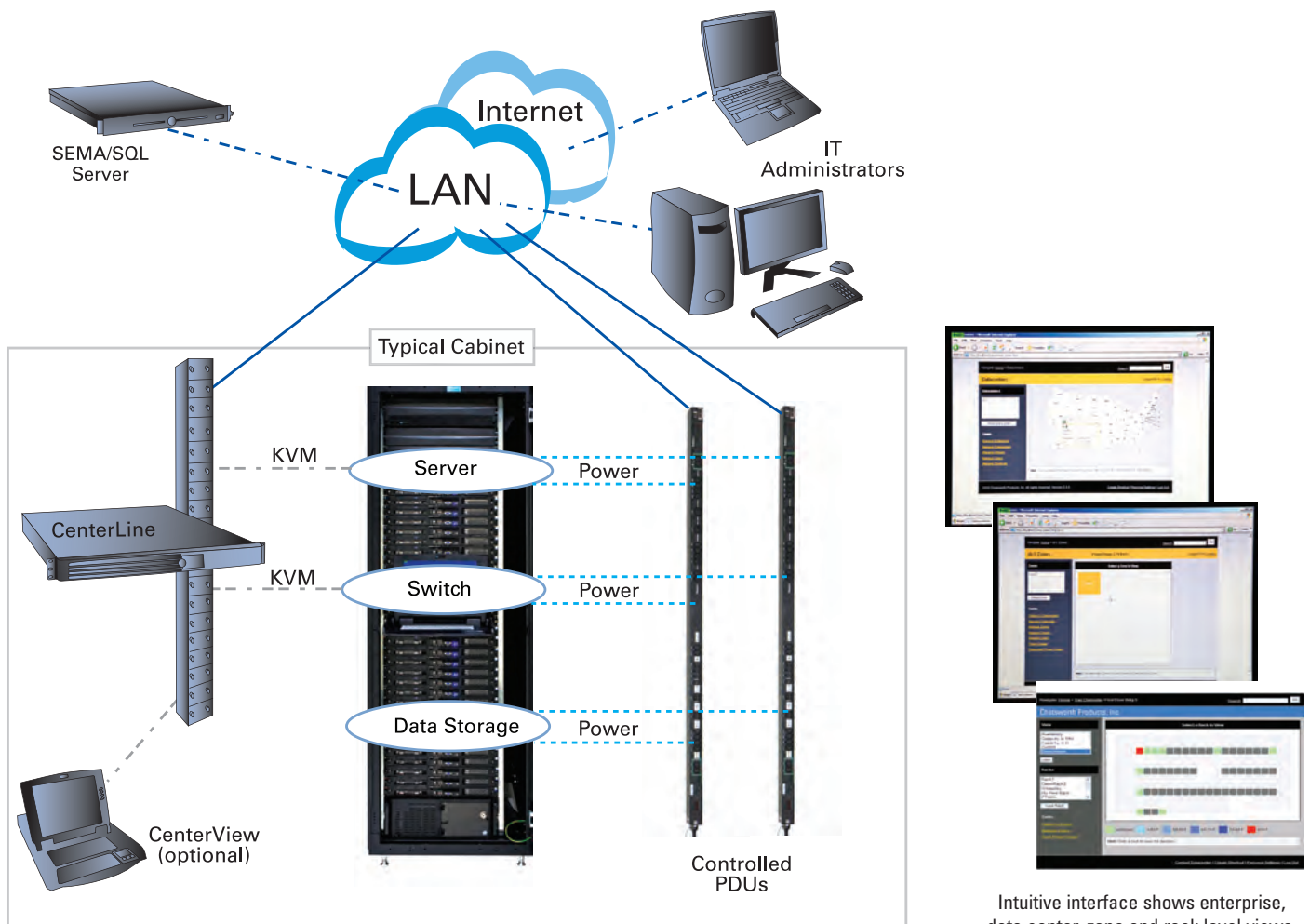


PRODUCT APPLICATION

KVM Over IP - Enterprise Infrastructure Solutions

Chatsworth Products, Inc. (CPI) Enterprise Infrastructure Solutions provide complete systems for enterprise-wide rack-level equipment access, asset management, power measurement and control to help IT administrators and facility managers optimize daily data center tasks and energy use.

- Provides a single interface to access and control power to all rack-mount equipment
- Quickly locate equipment using a central, searchable database that stores equipment names and specifications
- Easily switch views between servers, network switches and data storage equipment; an integrated terminal emulator allows access to CLI devices
- Setup equipment remotely using the USB sharing function
- Control the status of each Power Distribution Unit (PDU) outlet (on/off) and cycle power if required
- Automatically measure and record temperature and humidity in each rack/cabinet and per-outlet power use by equipment
- Set and receive alarms for temperature, humidity and power usage limits
- Create power usage reports for data centers, racks, cabinets and equipment
- Use the capacity planning tools to see available RMU, temperature and power use for each rack



CHATSWORTH PRODUCTS, INC.

800-834-4969

techsupport@chatsworth.com
www.chatsworth.com

SOLUTION OVERVIEW:

CPI's Enterprise Infrastructure Solution combines the Scalable Enterprise Management Application (SEMA) software, CenterLine and Controlled PDUs to create a complete system to control and manage your data center. For remote sites or low-density cabinets, CenterBridge can be used as an alternative to CenterLine. Product descriptions are listed below. Contact CPI Technical Support for planning assistance.



<< Scalable Enterprise Management Application (SEMA) – SEMA software provides enterprise-wide browser-based access to all other system components including servers and network switches that are attached to CenterLine or CenterBridge. The software stores critical information about each device in a searchable, centralized database making it easy to locate equipment; automatically measures and records temperature, humidity and per-outlet (per device) power, and provides current-usage reporting, power cycling and threshold alarms when used with CPI SEMA-compatible Controlled PDUs.



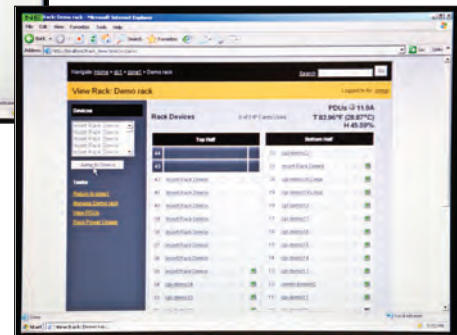
The CenterLine is used with SEMA software as part of the KVM switching solution. The vertical column offers 42 positions for Server Interface Module (SIM) cards and can be configured to match individual system requirements. The complete networked enterprise KVM switching solution includes, CenterLine, CenterBridge, CenterView KVM Console, Monitored and Controlled PDUs, PowerScope In-Line Meter and SEMA software.



Access servers remotely



SEMA-software provides access to power usage reports



Views per outlet power measurements, outlet on/off status and remotely cycle power



<< CenterLine – CenterLine is a scalable, enterprise-class keyboard, video and mouse (KVM) switch that supports connections for up to 42 devices (servers and network switches), allows up to four users to simultaneously view different port connections, provides remote, browser-based access to connected devices over the IP network using SEMA software and local access to connected devices from a separate CenterView KVM Console or CenterPoint™ KVM Switch/Console.



<< Controlled Power Distribution Units (PDUs) – Controlled PDUs distribute power to multiple devices in the rack or cabinet from a single power connection. Available with NEMA or IEC style plug and outlet receptacles to match facility requirements and circuit breakers to limit current and protect circuits from overload. Networked ammeters provide easy current monitoring, include switched outlets to allow remote power cycling and per-outlet current monitoring. Integrate with SEMA software, to provide real-time IP-based power monitoring across your entire enterprise. As an alternative, you can also use the PowerScope In-Line Meter with existing PDUs or Monitored PDUs to monitor total current use for each rack or cabinet.



<< CenterBridge – CenterBridge is a combination enterprise-class KVM switch and eight-outlet controlled PDU that is used as an alternative to separate CenterLine and Controllable PDUs in cabinets that have eight or less equipment connections. CenterBridge supports connections for up to eight devices (servers and switches) and allows one remote and one local user to simultaneously view different port connections. Provides remote, browser-based access to connected devices for one user over the IP network using SEMA software and local access to connected devices for a second user from a separate CenterView KVM Console.



<< CenterView KVM Console – Use CenterView KVM Console with a CenterLine or a CenterBridge to provide local access to equipment in the rack or cabinet. CenterView KVM Console is a combination 1 RMU TFT flat panel monitor, keyboard and touch pad drawer that connects to one CenterLine or CenterBridge. As an alternative, you can also use CenterPoint KVM Switch/Console to connect to multiple CenterLines or CenterBridges from a single console.

ORDERING INFORMATION:

Part Number	Description	Shipping Weight
1 SEMA Software - License, Activation Keys - 1 Year Maintenance		
36000-100	SEMA Base License, 1 Year Software Maintenance & Updates	2 lb (0.9 kg)
36000-103	SEMA, 50 Nodes Activation Keys	2 lb (0.9 kg)
36000-104	SEMA, 100 Nodes Activation Keys	2 lb (0.9 kg)
36000-107	SEMA, Site, Activation Keys	2 lb (0.9 kg)
2 CenterLine		
35900-102	Includes 10 SIM Cards, 1 RIM Card and 1 LIM Card	50 lb (22.7 kg)
3 SIM, LIM and RIM Cards for CenterLine		
35900-001	Server Interface Module (SIM) Card	2 lb (0.9 kg)
35900-002	Local Interface Module (LIM) Card	2 lb (0.9 kg)
35900-003	Remote User Interface Module (RIM) Card	2 lb (0.9 kg)
4 Cables		
<i>SIM Cables are used to attach servers and network switches to CenterLine or CenterBridge</i>		
35901-214	SIM Cable with Video, PS/2, USB and Serial Connectors, 4'L (1.2 m)	2 lb (0.9 kg)
35901-234	SIM Cable with Video, USB and Serial Connectors, 4'L (1.2 m)	2 lb (0.9 kg)
35901-224	SIM Cable with Serial Connector, 4'L (1.2 m)	2 lb (0.9 kg)
<i>LIM Cable are used to attach CenterView or CenterPoint to CenterLine or CenterBridge</i>		
35901-112	LIM Cable, 12'L (3.7m)	2 lb (0.9 kg)
5 Controlled PDUs		
35882-5A2	Horizontal, 19"EIA x 1 RMU x 28"D (711 mm), Single-Phase, 250 VAC 30 Amp, NEMA L6-30P plug, 24 IEC60320 C13 outlets	11 lb (5.0 kg)
35822-583	Vertical, For F-Series TeraFrame Cabinet, Single-Phase, 250 VAC, 30 Amp, NEMA L6-30P plug, 24 IEC60320 C13 outlets and 4 IEC60320 C19 outlets	31 lb (14.1 kg)
35812-551	Vertical, For F-Series TeraFrame Cabinet, Three-Phase, 250 VAC, 30 Amp, NEMA L15-30P plug, 24 IEC60320 C13 outlets	31 lb (14.1 kg)
35822-573	Vertical, For T-Series SteelFrame Cabinet, Single-Phase, 250 VAC, 30 Amp, NEMA L6-30P plug, 24 IEC60320 C13 outlets and 4 IEC60320 C19 outlets	31 lb (14.1 kg)
35812-541	Vertical, For T-Series SteelFrame Cabinet, Three-Phase, 250 VAC, 30 Amp, NEMA L15-30P plug, 24 IEC60320 C13 outlets	31 lb (14.1 kg)
CenterBridge		
35940-802	Includes 8 KVM, 1 Ethernet, 1 Console Connection and 8 IEC60320 C-13 outlets (6 controllable)	15 lb (6.8 kg)
CenterView KVM Console		
35920-001	19"EIA x 1 RMU x 15" TFT Flat Panel Monitor, Keyboard and Touch Pad, Black	22 lb (10.0 kg)
6 CenterPoint™ KVM Switch/Console		
35910-811	19"EIA x 1 RMU, 1-user, 8 port KVM Switch and Console, Black	44 lb (20.0 kg)
Recommended Accessories		
35941-132	Temperature & Humidity Sensor RJ11, 5'6"L (1.7 m) Cord	2 lb (0.9 kg)

Note: There is one Temperature & Humidity Sensor connection on each Controlled PDU and CenterBridge.

Other options are available. Contact CPI Technical Support for configuration assistance.



Don't see what you need? Visit us at www.chatsworth.com for a complete line of Power and Enterprise Infrastructure Solutions.



CHATSWORTH PRODUCTS, INC.

All products quoted are subject to availability based on manufacturing capacity and shipping dates should be considered estimates only. While every effort has been made to ensure the accuracy of all information, CPI does not accept liability for any errors or omissions and reserves the right to change information and descriptions of listed services and products.

©2009 Chatsworth Products, Inc. All rights reserved. CPI, CPI Passive Cooling, Saf-T-Grip, Seismic Frame, SlimFrame and MegaFrame are federally registered trademarks of Chatsworth Products, Inc. Cube-IT Plus, Evolution, OnTrac, QuadraRack, Simply Efficient and TeraFrame are trademarks of Chatsworth Products, Inc. All other trademarks belong to their respective companies. 09/09/NB MKT-60020-469