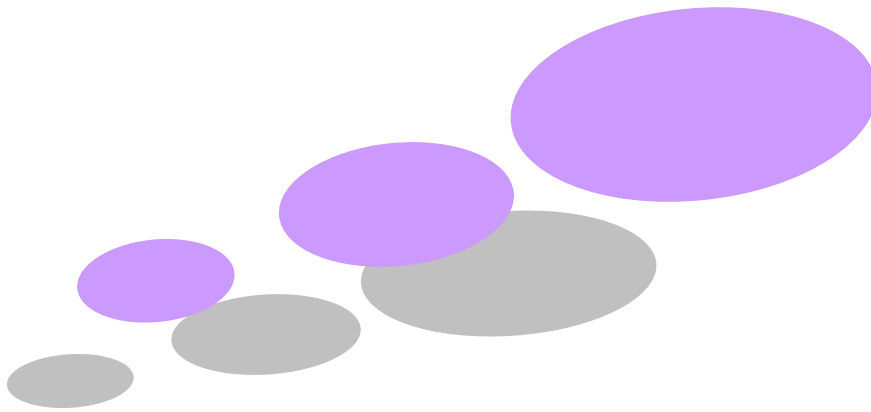


U Space 6210 Server Plus Cabinet

6210 Server Plus Cabinet





The 6210 Server Cabinet carries forward all the benefits of the Open Structure 6210 frame design but with the addition of high airflow doors

- Open Structure design
- In excess of 85% venting
- Superior cable management
- Versatile
- 1200kg weight loading
- Secure quick release cladding
- Multi-server practice
- Value added styling

USystems engineers have continued to develop the 6210 Server Cabinet utilising the highly acclaimed design of the 6210 frame solution and currently offer the following solutions.

AirTech™ Plus Server Cabinet

At a massive 85% airflow capacity the 6210 AirTech™ Plus Cabinet out performs most standard server cabinets simply by its innovative design without compromise to style, strength or functionality.



Standard AirTech™ Server Cabinet

At an impressive 80% airflow the standard 6210 Server Cabinet is the perfect combination of value for money and outstanding performance.



Dimensions & Specifications

1000deep 6210 Sever

Usable Height	42U	48U	42U	48U
Overall Height *	1983mm	2250mm	1983mm	2250mm
Weight	101.42kg	111.32kg	110.03kg	123.93kg
Footprint A	600mm	600mm	800mm	800mm
Footprint B**	1000mm	1000mm	1000mm	1000mm
Dimension C***	96mm	96mm	96mm	96mm
Dimension D***	196mm	196mm	196mm	196mm

* Add 60mm for transport castors or 100mm for weight bearing castors and plinth

**Add 49.2mm for standard AirTech doors and 101mm for AirTech Plus doors

*** Add 24.6mm for standard AirTech Doors & 50.5mm for AirTech Plus

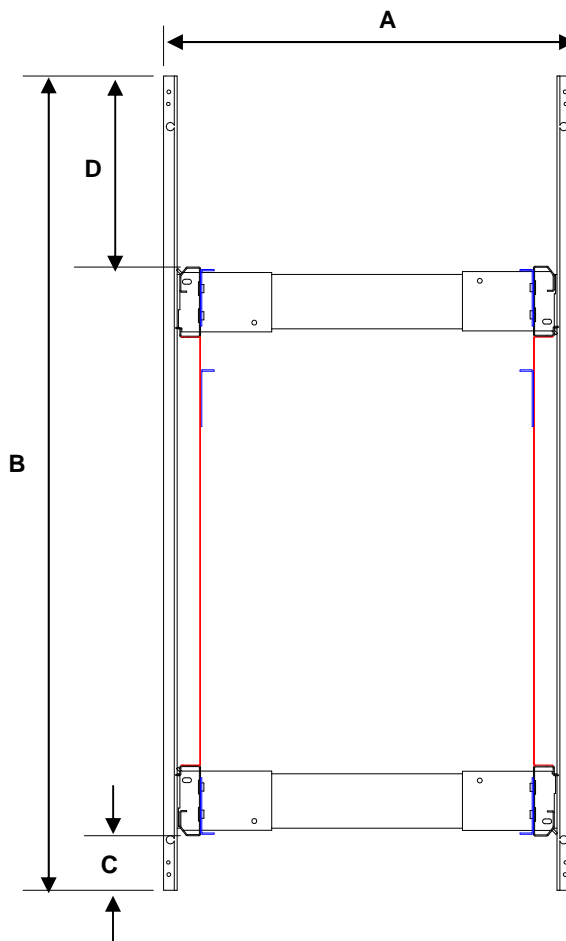
1200deep 6210 Sever

Usable Height	42U	48U	42U	48U
Overall Height *	1983mm	2250mm	1983mm	2250mm
Weight	116.32kg	127.22kg	124.93kg	139.83kg
Footprint A	600mm	600mm	800mm	800mm
Footprint B**	1200mm	1200mm	1200mm	1200mm
Dimension C***	96mm	96mm	96mm	96mm
Dimension D***	296mm	296mm	296mm	296mm

* Add 60mm for transport castors or 100mm for weight bearing castors and plinth

**Add 49.2mm for standard AirTech doors and 101mm for AirTech Plus doors

*** Add 24.6mm for standard AirTech Doors & 50.5mm for AirTech Plus



Standard Build Specification

Frame:

4 x uprights
1 x top end frame.
1 x bottom end frame.
Front mounting angles
Tough Torque™ fixings..

Cladding:

AirTech™ Plus or Standard AirTech™
Door
AirTech™ rear door.
2 x lockable side panels
Vented and cable entry top cover

Supply:

Set (4) transport castors
Assembled fully configured
(Flat pack available on request)
Optional cabinet siting

Weight Loading

1200kgs Evenly Spread

Airflow

AirTech Plus 85% plus surface area
AirTech Standard 80%

Material and Colour

CR4 Steel
Anthracite RAL 7016 Epoxy Polyester Powder
(Other colours available upon request)
Finish: Textured

Standards

Manufactured in accordance with IEC 297 3 and EIA STD 310 for panels and racks housing electronic equipment.
ISO9001 Accreditation

USpace Blanking Panel



- Prevents hot air exhaust re-circulation
- Tool-Free installation
- Energy saving
- Black or Anthracite available
- Quick to fit and secure
- Speeds up installation time
- 1U, 2U, 3U & 5U available as standard
- Compatible with any vendors 19" EIA cabinets



USpace 6210 Server Cabinet

Multi-Application 'MAP' Tile



- Prevents air pressure loss in raised flooring
- No cutting of floor tiles
- Speed up installation time
- Weight Tested to 1500kg
- Save energy costs
- Various sizes available
- Designed to fit with all types of raised floor
- Compatible with any vendors 19" cabinets

